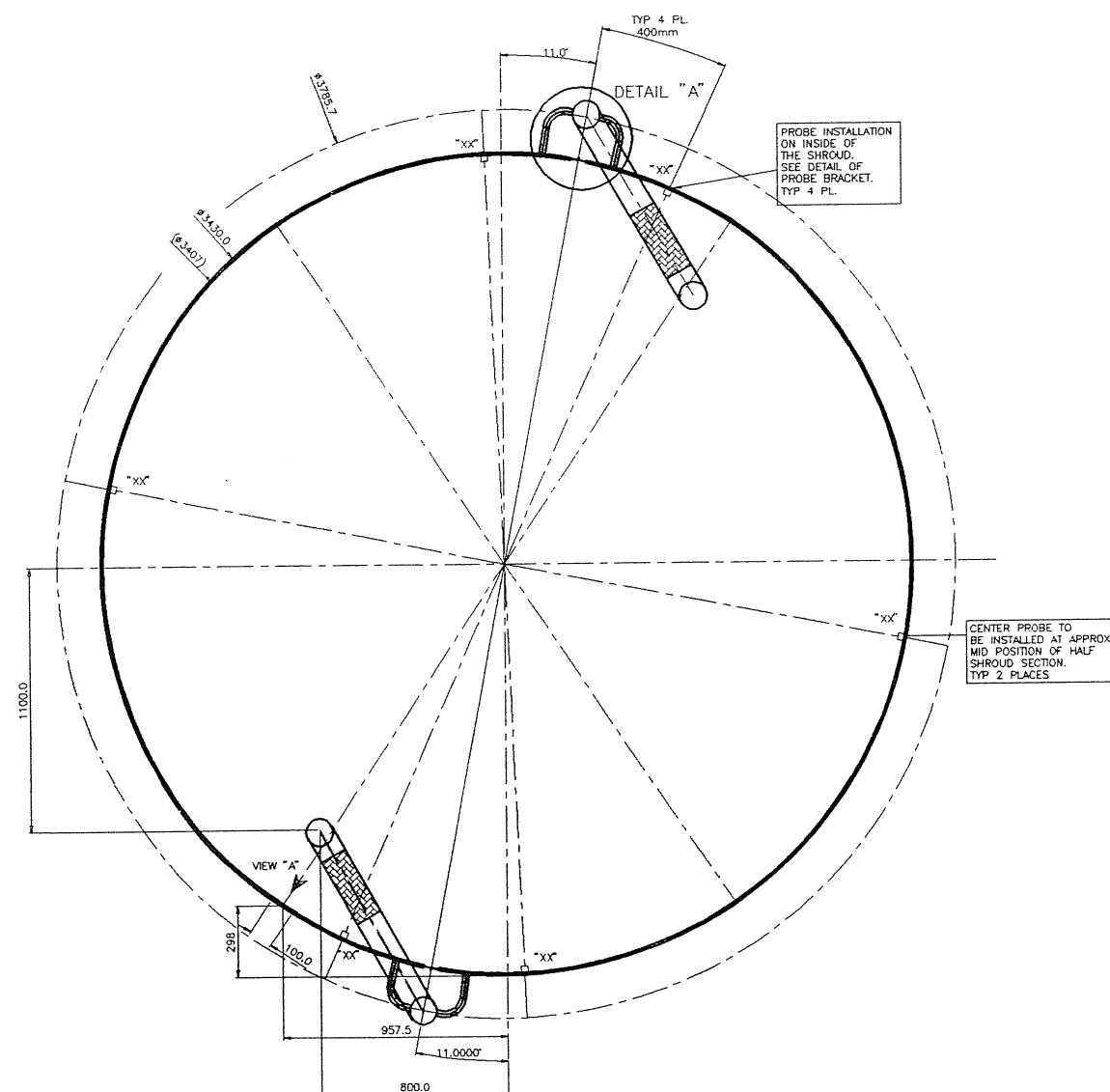
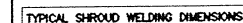
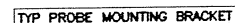


Technical drawing of a tapered shaft. The shaft is shown in perspective, tapering from left to right. It has a central longitudinal hole. Two cross-sections are indicated: 'AA' at the left end and 'BB' at the right end. A dimension line labeled 'DIMENSION "B"' is shown at the bottom, indicating the length of the shaft. A table titled 'SURFACE FINISH' is located in the upper right corner.

SURFACE FINISH	
AA	PAINT MATT BLACK (REF. TO VAC SPEC)
BB	HAND POLISH TO 0,4 μ m



NOTES: (HARDING STANDARD) (STAIN)		MATERIAL		DIMENSIONS (TOLERANCES)	
1)	REMOVE ALL BURRS.	STAINLESS STEEL 304		+0.05	
2)	SHARP EDGES TO 0.5x45 MAX.			X XX	
3)	SOEW THRESHOLD: 0.005 IN			X XX	
4)	SURFACE TEXTURE: 163			X XX	
	(R6 TO 0.001302)			ANGLES	
				+0.05	
				-0.05	
				-0.1	

DL	92-8-27		TITLE: SHROUD 4	
DL	92-7-3			
DL	6-2-30			
DL			TO SABS 0111	
91-11-28			ISSUE: A B C D	
DATE: VTF00120				
OFF.	DATE: VTF00120	DRG NO: VTF-12400-122	SHT	1 OF 1
		SCALE: 1:1	UNLESS OTHERWISE STATED	